



Docklands Residential



30 High Street

, London, E15 2PL

£425 Per week

AVAILABLE NOW-----

George Hudson Tower. Spacious and well laid out 1 double bedroom apartment in the Hudson Tower of the ONE Stratford development E15. Situated on the canal side and only just finished being built, this superb apartment is great for a city style living space but for a fraction of the price.

The property has wooden flooring throughout and is modern and functional. The closest tube station is Stratford and this gives you access to the City in under 20 minutes and Canary Wharf E14 in under 15 minutes.

The apartment comprises of open plan kitchen / reception area with private balcony, double bedroom with fitted wardrobes and modern full bathroom suite.

Located a short distance walk to Stratford International Station, allowing great access to The City, Canary Wharf and Eurostar.

Viewing

Please contact us on 0203 8415697 if you wish to arrange a viewing appointment for this property or require further information.



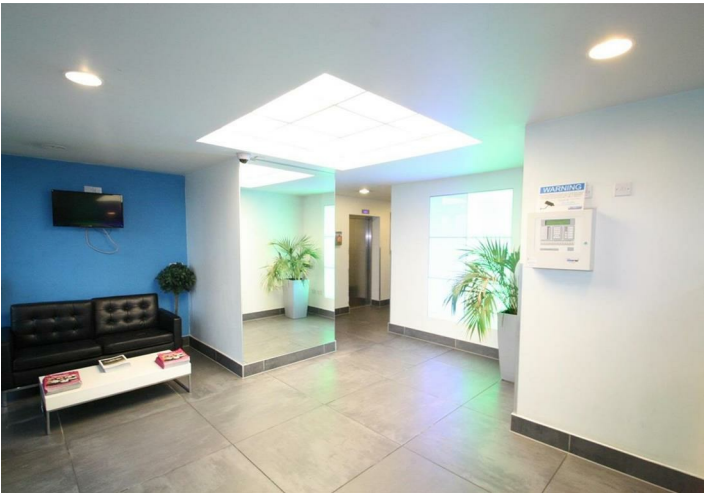
Floor Plan



Area Map



Energy Efficiency Graph



These particulars, whilst believed to be accurate are set out as a general outline only for guidance and do not constitute any part of an offer or contract. Intending purchasers should not rely on them as statements of representation of fact, but must satisfy themselves by inspection or otherwise as to their accuracy. No person in this firm's employment has the authority to make or give any representation or warranty in respect of the property.